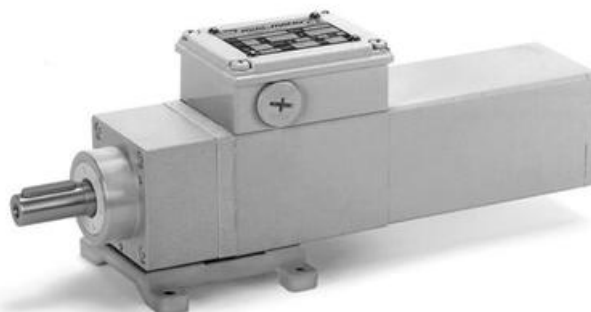


MINIMOTOR - ACEF COAXIAL GEAR MOTORS WITH FURTHER PLANETARY GEAR

ACEF2T2B3-75

- For clean environments
- IP67 as standard
- Up to 23.5Nm rated torque
- Minimal dirt trap points
- Epoxy coated with no external fan



PRODUCT DESCRIPTION

COAXIAL AND PLANETARY GEARED MOTOR

White epoxy coating for increased protection against chemicals and harsh working environments.
IP67 rated with no external fan.

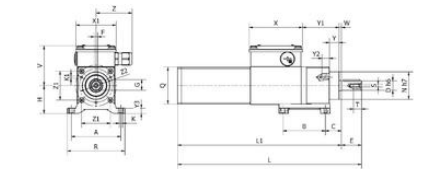
MOTOR: Asynchronous three-phase motor with 2 poles, totally Class H winding in accordance with CEI EN 60034-1.

GEAR UNIT: With casing in die-cast aluminium. Case-hardened and hardened bearings, output shaft in stainless steel on request. Lubrication with long-lasting oil (not toxic).

15 gear ratios (i) available, from 37 to 2209.5. Rated torque from 3.9 to 23.5 Nm. Version B3 or B5.

TECHNICAL DATA

Input voltage ac	230Δ/400Y
IP class	IP67
Nominal speed	75 rpm
Nominal torque	3,9 Nm
Output power	31 W
Rated current	0.30Δ/0.17Y A
Ratio	37:1



B3

Type Type Type	A	B	C	D	E	F	G	H	K	K1	L	L1	N	Q	R
ACEF2T2	74	63	24	14	30	5	16	43	5,5	M4	274	244	41	55	86

Type Type Type	S	T	V	X	X1	Y	Y1	Y2	Y3	W	Z	Z1	Z2	Pos. Weight Capacity kg
ACEF2T2	M5	12	60	80	60	14,5	55	11	8	3,5	56	43	50	3,200

Electric motor

15.06.2017

Sensored motor

15.06.2017

Worm gearmotor

15.06.2017

Brushless servomotors

15.06.2017

Clean products

15.06.2017

Directs

15.06.2017

Please see product description above for 2D and 3D drawings